

018-01-004-A  
Fastener, Standard: Screw [#8-32 X 0.250 TLG]

TORQUE: 5.0±0.5 IN-LB

LOCTITE: BLUE 242 ONE DROP

210-22-446 REBOUND KNOB

820-05-335-KIT BASE STUD INTERFACE PARTS

241-00-011 BOTTOM NUT

241-01-011 CRUSH WASHER

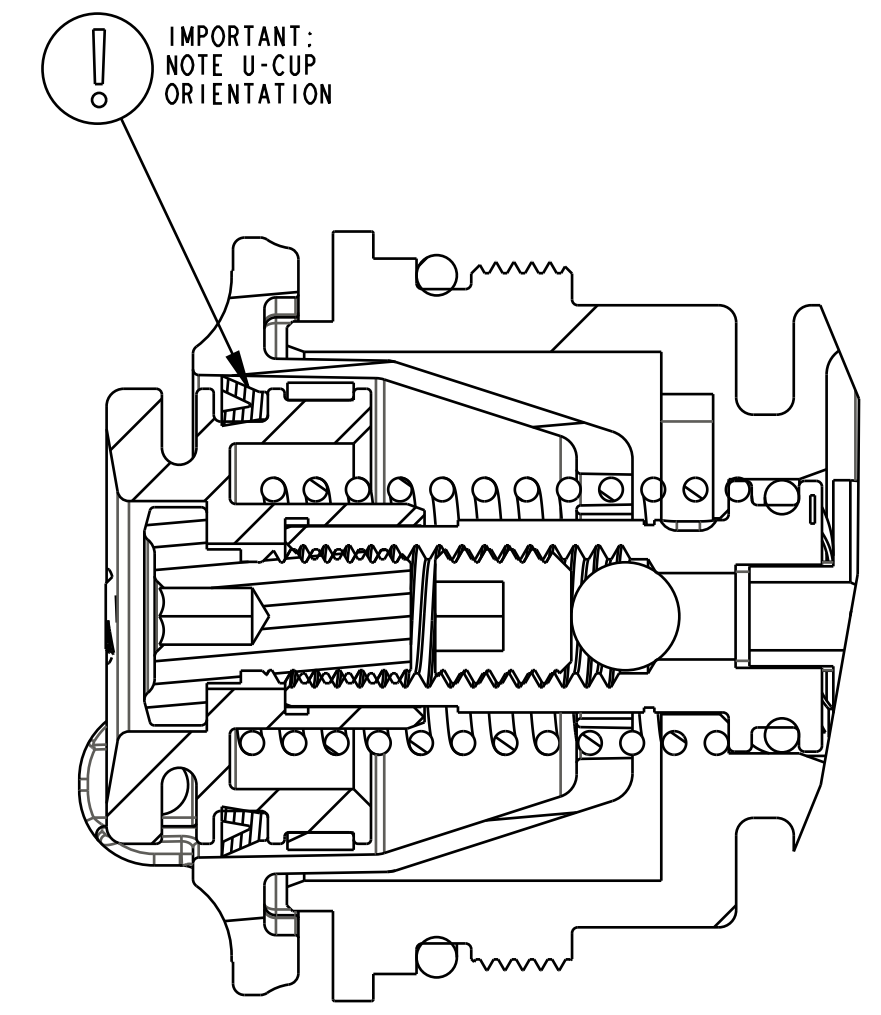
TORQUE: 50±5 IN-LB

REFERENCE ONLY (FOR INSTALLATION INTO FORK)

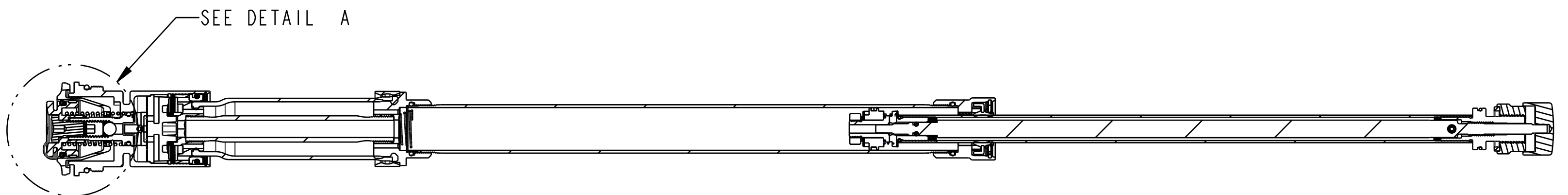
REFERENCE ONLY (FOR INSTALLATION INTO FORK)

TORQUE: 220±5 IN-LB

CARTRIDGE ASSY



DETAIL A  
SCALE 3.000



GREASE: THIN LAYER BLUE MARINE

210-22-944 Cable Pulley, Remote, FIT4

IMPORTANT: DO NOT ALLOW PULLEY TO ROTATE WHILE TORQUING

TORQUE: 11±3 IN-LB

210-22-947 Damping Adjust Part: Housing, Remote, Hubless, FIT4

039-00-291 Spring: Torsion 2013 Damper CTD Remote, .048 Square Wire, 0.600 Mean Coil Diam (

002-02-050 Bearing: External [0.115 W X 0.810 OD X 0.030 TH, Ø 0.750 Bore] Turcon,Blue,Ring

036-01-044 Seals: U-Cup, Shore 70A, 2013 CTD-ADJ, Remote Fit-CTD and Remote O/C-CTD

019-01-088 Set Screw [M4x4mm], SST, Cup Point, Patchlock

019-02-024 Fastener Standard (Metric): Socket Head Cap [M6 X 1.0 X 6MM] SST, Patchlock

820-05-333-KIT 2016 FIT4 TopCap Remote Interface Parts P-S

PROPRIETARY - THIS DOCUMENT CONTAINS CONFIDENTIAL, PROPRIETARY INFORMATION THAT IS FOR PROPERTY. DO NOT DISCLOSE TO OR DUPLICATE FOR OTHERS EXCEPT AS AUTHORIZED BY FOX.

**FOX Factory, Inc.**  
130 Hangar Way, Watsonville, CA 95076 USA  
Ph 831-768-1100 Fax 831-768-9312

TITLE  
**RETRO 34mm 2016 P-S Remote FIT4 Cart Assy Complete**

SIZE DWG. NO.  
D

PLOT SCALE 1.00:1

SHEET 1 OF 1